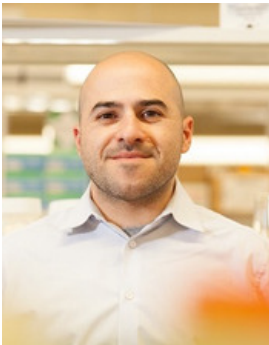




"Human Genomic Control of the Microbiome"

DR. BLEKHMAN IS INTERESTED IN UNDERSTANDING HOW GENETIC VARIATION BETWEEN INDIVIDUALS, POPULATIONS, AND SPECIES CREATES A WIDE RANGE OF PHENOTYPIC DIVERSITY. HIS MAJOR RESEARCH FOCUS IS ON UNDERSTANDING THE COMPLEX INTERACTIONS BETWEEN HUMANS AND THE MICROBIOME.



Ran Blekhman, PhD
Assistant Professor

Department of Genetics,
Cell Biology, and
Development
Department of Ecology,
Evolution, and Behavior

Jan. 27, 2017, 1:30-2:30pm

Moos Tower 5-125 (live from the Twin Cities) and 302 Heller Hall (Duluth)

Co-hosted by the Precision Medicine and Health Consortium <http://pmhc.umn.edu/> and the Minnesota Precision Medicine Collaborative Grand Challenge